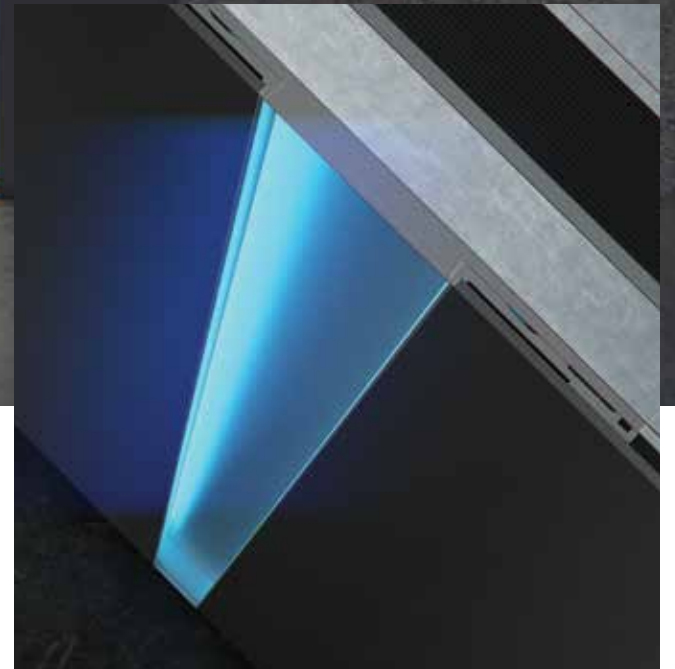


ENTRANCE DOOR

D110

Pivot Door System
The epitome of magnificence.



System Identity

Combining innovative technologies with special design lines, D110 Pivot Door by ALUMINCO creates the perfect entry into a home or commercial property.

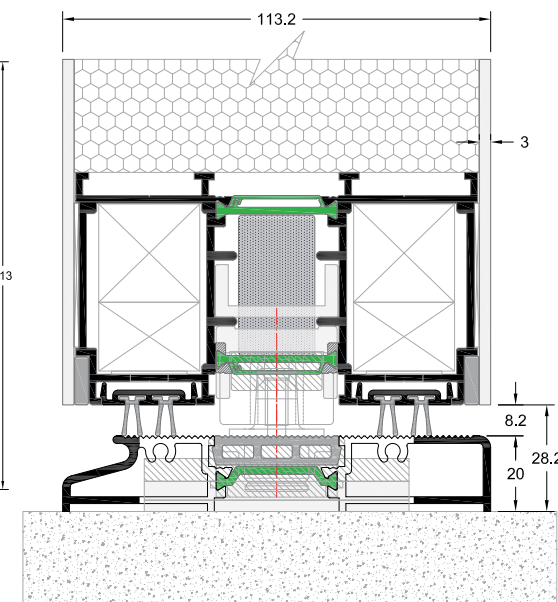
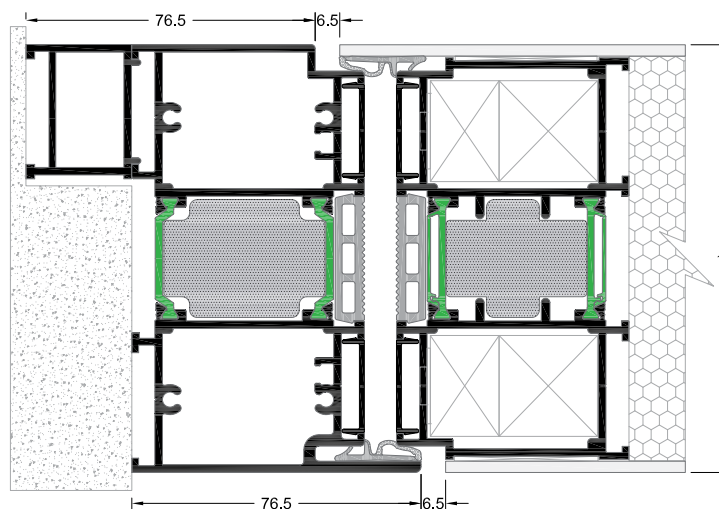
Impactful and beautiful design options, amazing strength, powerful hardware, massive panels, open with ease, are combined to make our pivot door the number one choice for entry doors.

Features & Benefits

- Anti-bi-metal polyamides, 32 mm, minimize the operational problems due to the temperature difference between inside and outside.
- Hidden pivot mechanism with door adjustment feature (right - left).
- On-floor powerful rotation mechanism.
- Hidden brake mechanism ensures slow and safe closing of the door, reducing the noise level and minimizing the risk of injury.
- Stainless steel single or multipoint lock with high burglar resistance cylinder.
- Low 20 mm threshold provides easy access, suitable for people with disabilities.
- Integrated recessed external handle of special design. The handle can optionally be illuminated by LED technology.
- Frame and sash create a flat surface.

Configurations

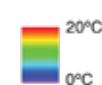
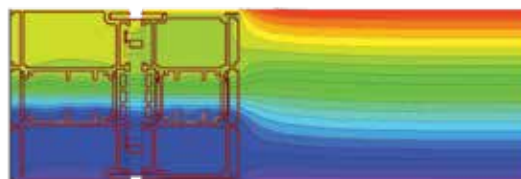
Door system



INSULATION	
ANTI BI-METAL POLYAMIDES mm	32
FOAM	■
SYSTEM PROFILE DIMENSIONS	
FRAME DEPTH mm	113
DOOR THICKNESS mm	113
ALUMINIUM SHEET THICKNESS mm	3
INSULATION THICKNESS mm	107
ROTATION AXE FROM SASH END mm	250

CONSTRUCTION DIMENSIONS	
SASH WIDTH mm	1000-2000
SASH HEIGHT mm	2100-3000
MAX. SASH DIMENSIONS mm (WxH)	1700x3000
MAX. SASH WEIGHT Kg	250

CERTIFICATES/PERFORMANCES	
THERMAL INSULATION Uf, EN ISO 10077-2	2.2-2.8 W/m ² K



Rate of Insulation

U_d=0.69 W/m²K

Thermal conductivity coefficient has been calculated for the construction: 2000x3000 with U_p=0.27 W/m²K
Type of panel: 3/107/3