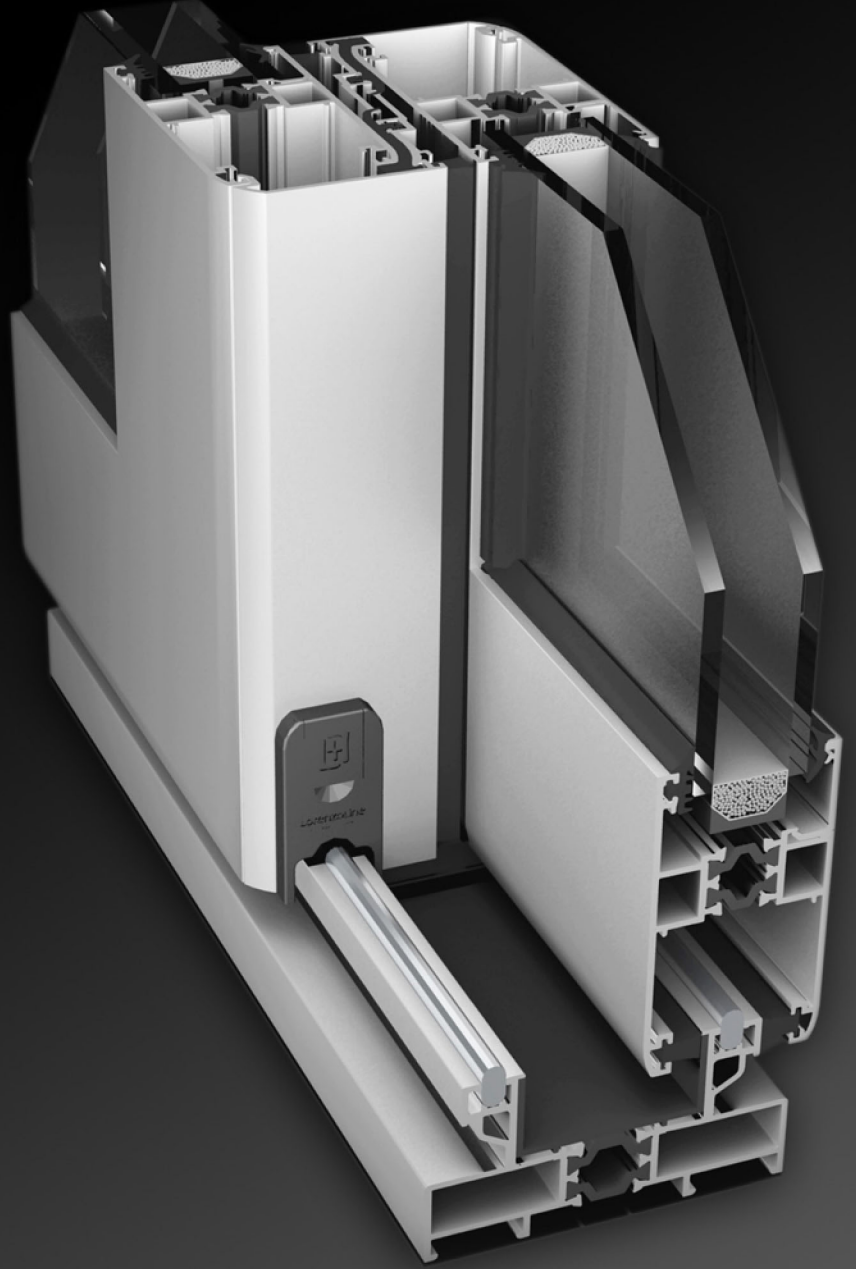


EDITION / VERSİYON  
UPDATE / GÜNCELLEME

05/2019  
07/2021

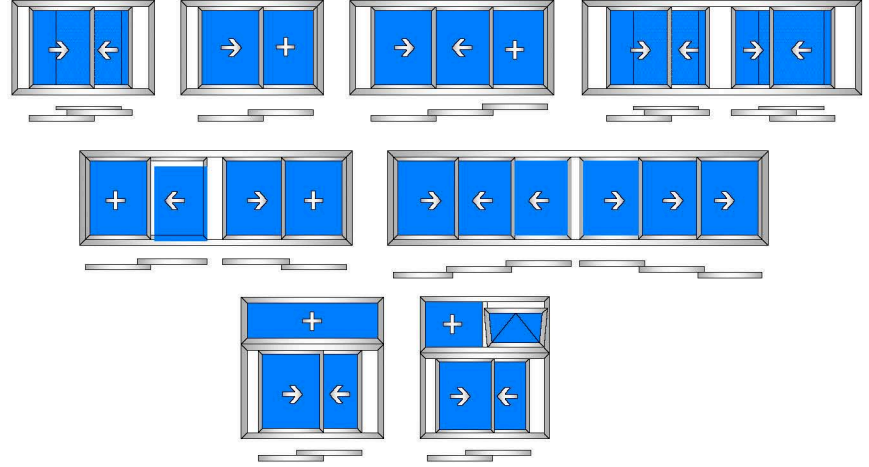
SLIDING SYSTEM  
SÜRME SİSTEMİ  
**SYSTEM 38T**  
**SİSTEM 38T**



**38T SYSTEM / SİSTEM**  
**TECHNICAL INFORMATION / TEKNİK BİLGİLER**

**System Properties / Sistem Özellikleri**

Frame Height / Kasa Geniřliđi	: 77.4 mm
Vent Height / Kanat Geniřliđi	: 38 mm
Wall Thickness / Et Kalınlıđı	: 1.4 - 1.5 mm
Insulation Bar / Isı Bariyer	: 14.8 mm
Sash Carrying Capacity Kanat Tařıma Kapasitesi	: 120 Kg
Thermal Permability Uf Isı Geçirgenlik Uf EN ISO 1077-2	: 4.45 W/m <sup>2</sup> K
EPDM Gaskets / EPDM Fıtil	
Glazing From 4 mm to 24 mm Cam Kullanımı 4 mm'den 24 mm	
Compatible with 60T / 60T ile Uyumlu	

**Sliding Opportunities / Sürme Seçenekleri****Code Logic / Kod Mantıđı**

38T	101	00
Title / Seri	Group / Grup	Factory Standard Fabrika Standardı

**Titles / Seriler**

38T - System Name / Sistem Adı
08 - Glazing Bead / Cam Çıtası
09 - Extruded Corner Joints / Pres Köşe Takozu

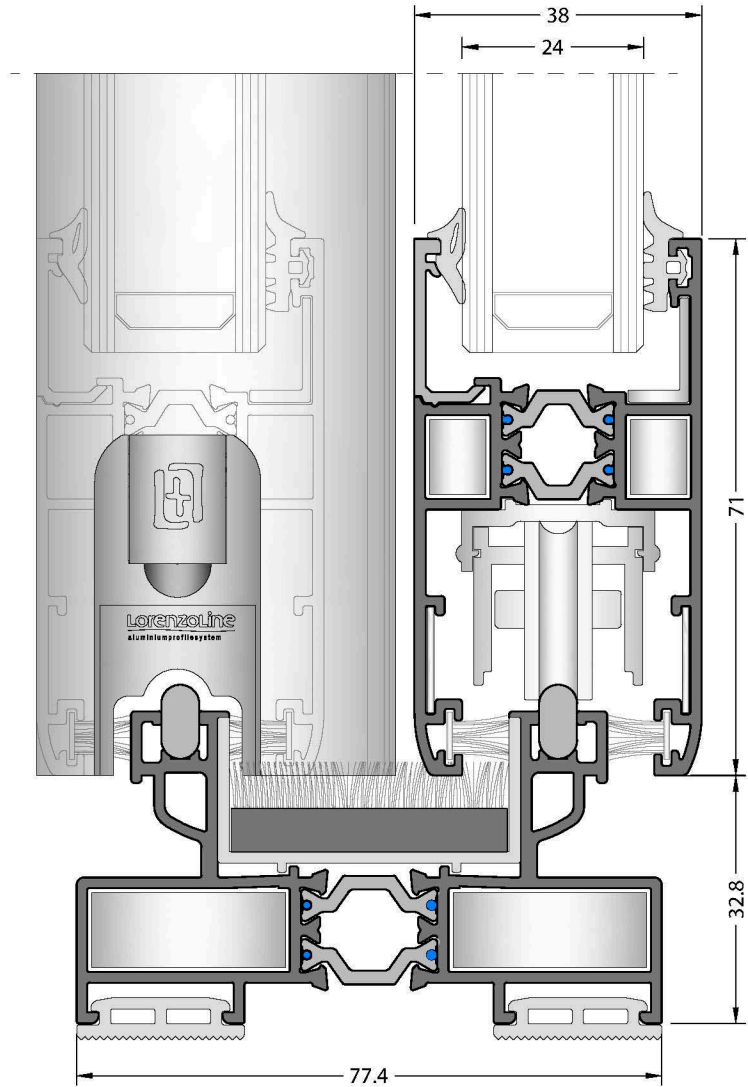
**Groups / Gruplar**

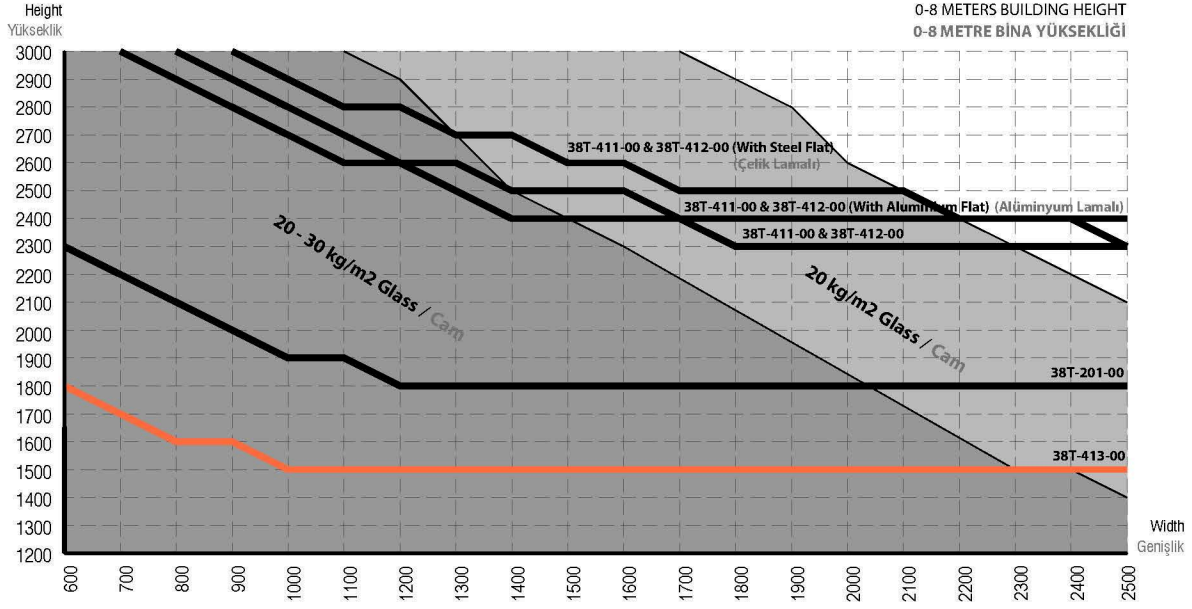
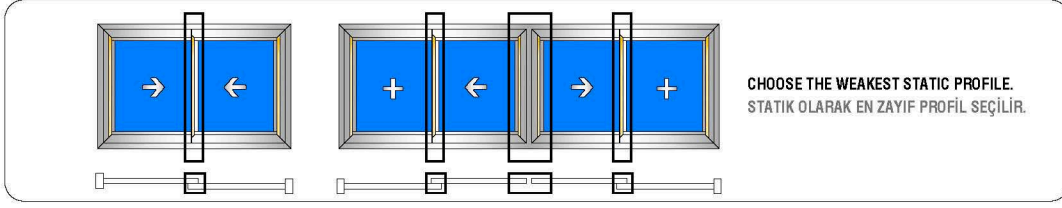
101, 102, ... Frames / Kasalar
201, 211, ... Vents / Kanatlar
301, 302, ... Mullions / Orta Kayıtlar
411, 412, ... Narrow Profiles / Dar Kenet
501, 502, ... Adapters / Adaptörler

**Alloy / Alařım**

The alloys of the aluminium profiles are 6060 and 6063 (AlMgSi 0,5 - F22) based on EN 12020-2 / 755-9 standards. Alüminyum profil alařımları 6060 ve 6063 (AlMgSi 0,5 - F22) EN 12020-2 / 755-9 standartlarına uygundur.

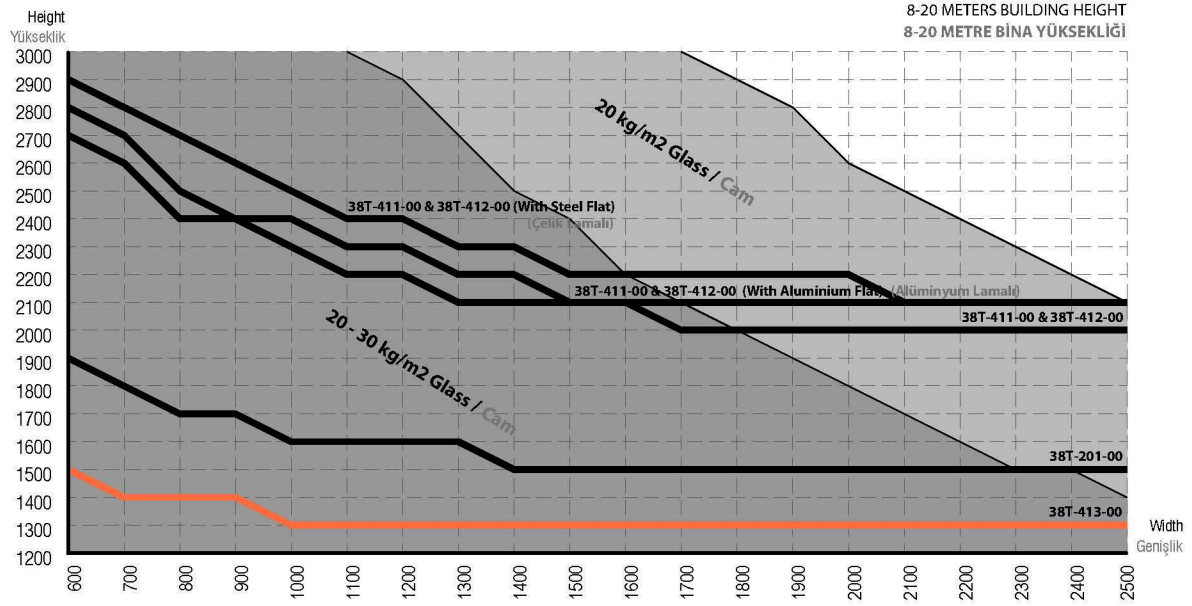
All drawings are not scaled.  
Tüm çizimler ölçeksizdir.





- 38T-411-00 & 38T-412-00 (0-8 meters Building Height) (With Steel Flat)  
(0-8 metre Bina Yüksekliği) (Çelik Lamalı)
- 38T-411-00 & 38T-412-00 (0-8 meters Building Height) (With Aluminium Flat)  
(0-8 metre Bina Yüksekliği) (Alüminyum Lamalı)
- 38T-411-00 & 38T-412-00 (0-8 meters Building Height)  
(0-8 metre Bina Yüksekliği)
- 38T-201-00  
(0-8 meters Building Height)  
(0-8 metre Bina Yüksekliği)
- 38T-413-00  
(0-8 metre Bina Yüksekliği)

- 20 kg/m2 Glass Area  
Cam Alanı
- 30 kg/m2 Glass Area  
Cam Alanı



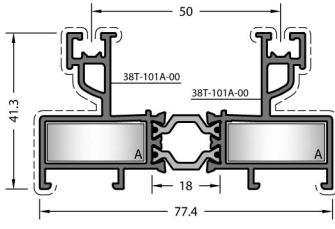
- 38T-411-00 & 38T-412-00 (8-20 meters Building Height) (With Steel Flat)  
(8-20 metre Bina Yüksekliği) (Çelik Lamalı)
- 38T-411-00 & 38T-412-00 (8-20 meters Building Height) (With Aluminium Flat)  
(8-20 metre Bina Yüksekliği) (Alüminyum Lamalı)
- 38T-411-00 & 38T-412-00 (8-20 meters Building Height)  
(8-20 metre Bina Yüksekliği)
- 38T-201-00  
(8-20 meters Building Height)  
(8-20 metre Bina Yüksekliği)
- 38T-413-00  
(8-20 meters Building Height)  
(8-20 metre Bina Yüksekliği)

- 20 kg/m2 Glass Area  
Cam Alanı
- 30 kg/m2 Glass Area  
Cam Alanı



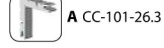


**38T SYSTEM / SÍSTEM  
PROFILES / PROFÍLLER**



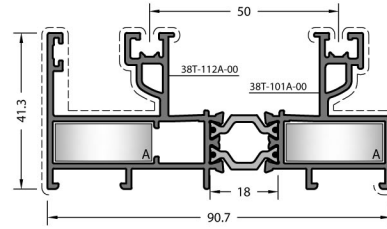
CODE / KOD  
**38T-101-00**

CORNER JOINTS  
KÖŞE BAĞLANTILAR



THEORETICAL WEIGHT kg/m  
TEORİK AĞIRLIK kg/m  
**1.462**

DIE-CAST CORNER JOINT  
PİMLİ BAĞLANTI



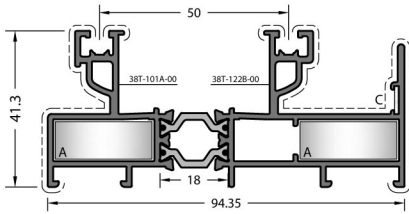
CODE / KOD  
**38T-112-00**

CORNER JOINTS  
KÖŞE BAĞLANTILAR



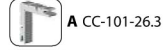
THEORETICAL WEIGHT kg/m  
TEORİK AĞIRLIK kg/m  
**1.707**

DIE-CAST CORNER JOINT  
PİMLİ BAĞLANTI



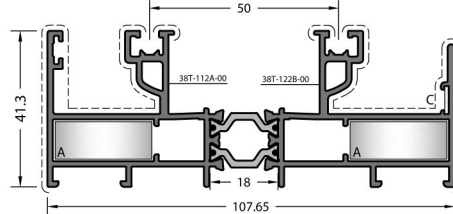
CODE / KOD  
**38T-122-00**

CORNER JOINTS  
KÖŞE BAĞLANTILAR



THEORETICAL WEIGHT kg/m  
TEORİK AĞIRLIK kg/m  
**1.710**

DIE-CAST CORNER JOINT  
PİMLİ BAĞLANTI



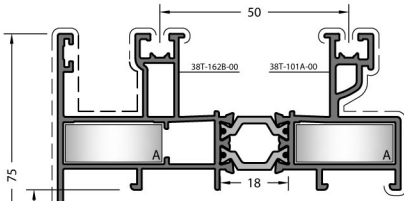
CODE / KOD  
**38T-132-00**

CORNER JOINTS  
KÖŞE BAĞLANTILAR



THEORETICAL WEIGHT kg/m  
TEORİK AĞIRLIK kg/m  
**1.955**

DIE-CAST CORNER JOINT  
PİMLİ BAĞLANTI



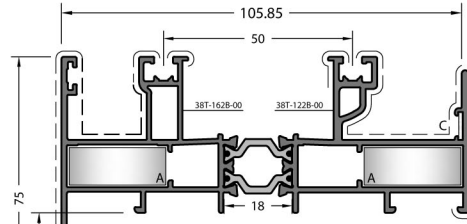
CODE / KOD  
**38T-162-00**

CORNER JOINTS  
KÖŞE BAĞLANTILAR



THEORETICAL WEIGHT kg/m  
TEORİK AĞIRLIK kg/m  
**1.773**

DIE-CAST CORNER JOINT  
PİMLİ BAĞLANTI



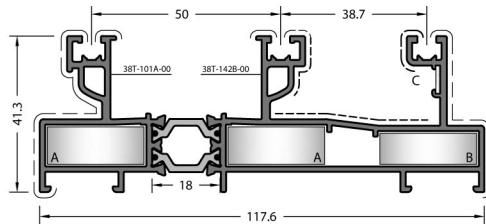
CODE / KOD  
**38T-172-00**

CORNER JOINTS  
KÖŞE BAĞLANTILAR



THEORETICAL WEIGHT kg/m  
TEORİK AĞIRLIK kg/m  
**2.021**

DIE-CAST CORNER JOINT  
PİMLİ BAĞLANTI



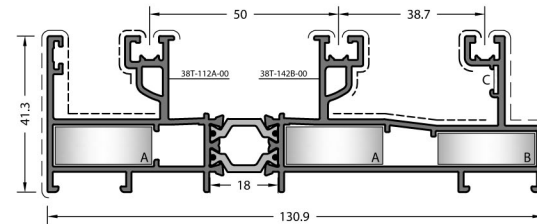
CODE / KOD  
**38T-142-00**

CORNER JOINTS  
KÖŞE BAĞLANTILAR



THEORETICAL WEIGHT kg/m  
TEORİK AĞIRLIK kg/m  
**1.982**

DIE-CAST CORNER JOINT  
PİMLİ BAĞLANTI



CODE / KOD  
**38T-152-00**

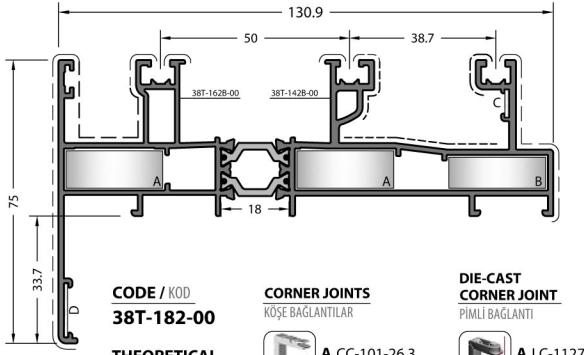
CORNER JOINTS  
KÖŞE BAĞLANTILAR



THEORETICAL WEIGHT kg/m  
TEORİK AĞIRLIK kg/m  
**2.226**

DIE-CAST CORNER JOINT  
PİMLİ BAĞLANTI

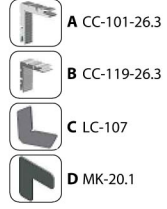




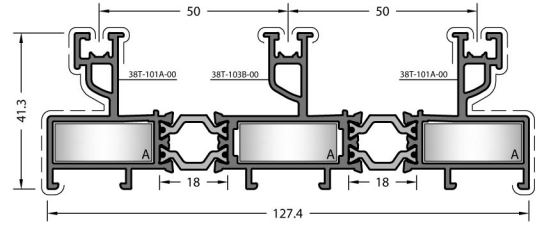
**CODE / KOD**  
**38T-182-00**

**THEORETICAL WEIGHT kg/m**  
TEORİK AĞIRLIK kg/m  
**2.292**

**CORNER JOINTS**  
KÖŞE BAĞLANTILAR



**DIE-CAST CORNER JOINT**  
PİMLİ BAĞLANTI



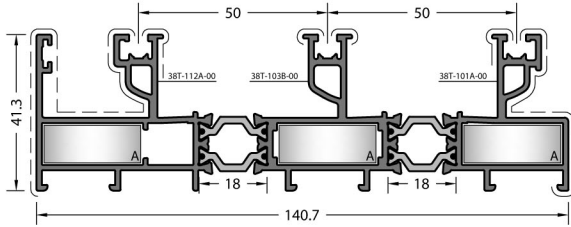
**CODE / KOD**  
**38T-103-00**

**THEORETICAL WEIGHT kg/m**  
TEORİK AĞIRLIK kg/m  
**2.350**

**CORNER JOINTS**  
KÖŞE BAĞLANTILAR



**DIE-CAST CORNER JOINT**  
PİMLİ BAĞLANTI



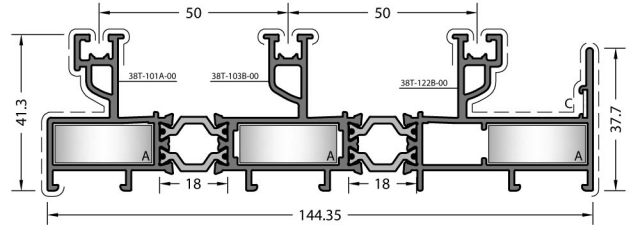
**CODE / KOD**  
**38T-113-00**

**THEORETICAL WEIGHT kg/m**  
TEORİK AĞIRLIK kg/m  
**2.595**

**CORNER JOINTS**  
KÖŞE BAĞLANTILAR



**DIE-CAST CORNER JOINT**  
PİMLİ BAĞLANTI



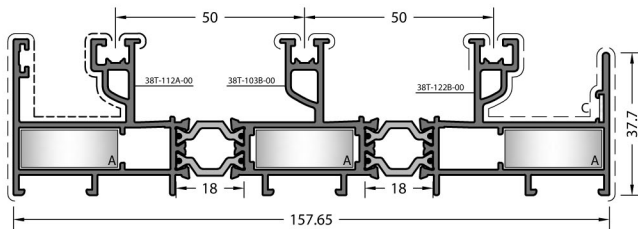
**CODE / KOD**  
**38T-123-00**

**THEORETICAL WEIGHT kg/m**  
TEORİK AĞIRLIK kg/m  
**2.598**

**CORNER JOINTS**  
KÖŞE BAĞLANTILAR



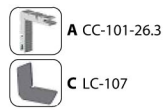
**DIE-CAST CORNER JOINT**  
PİMLİ BAĞLANTI



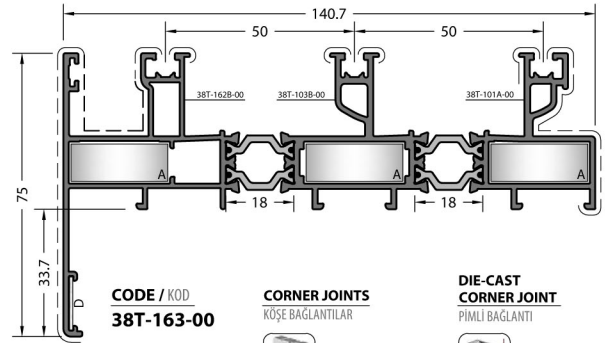
**CODE / KOD**  
**38T-133-00**

**THEORETICAL WEIGHT kg/m**  
TEORİK AĞIRLIK kg/m  
**2.843**

**CORNER JOINTS**  
KÖŞE BAĞLANTILAR



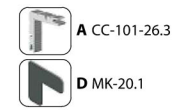
**DIE-CAST CORNER JOINT**  
PİMLİ BAĞLANTI



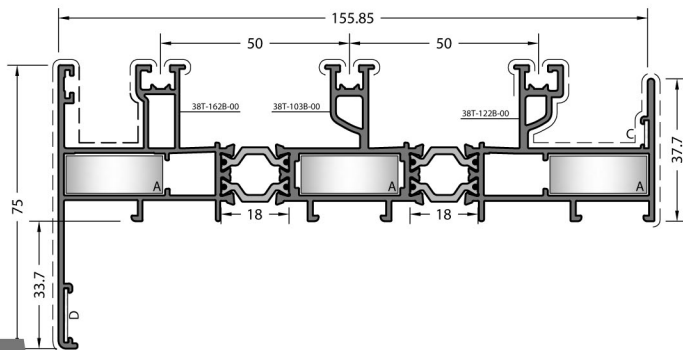
**CODE / KOD**  
**38T-163-00**

**THEORETICAL WEIGHT kg/m**  
TEORİK AĞIRLIK kg/m  
**2.661**

**CORNER JOINTS**  
KÖŞE BAĞLANTILAR



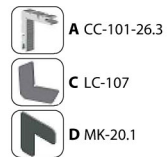
**DIE-CAST CORNER JOINT**  
PİMLİ BAĞLANTI



**CODE / KOD**  
**38T-173-00**

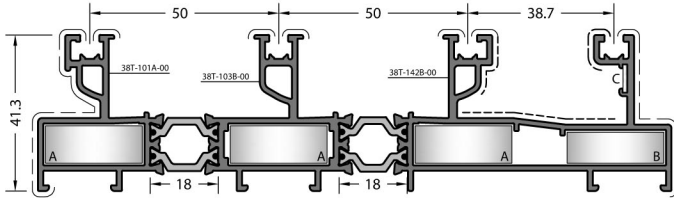
**THEORETICAL WEIGHT kg/m**  
TEORİK AĞIRLIK kg/m  
**2.909**

**CORNER JOINTS**  
KÖŞE BAĞLANTILAR



**DIE-CAST CORNER JOINT**  
PİMLİ BAĞLANTI





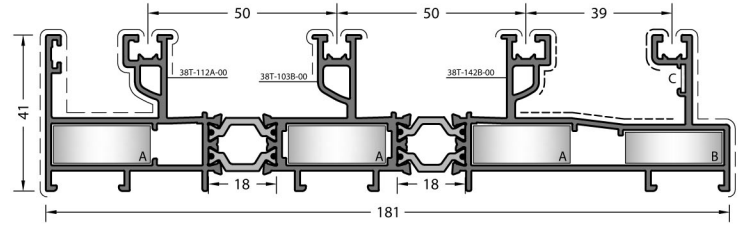
**CODE / KOD**  
**38T-143-00**

**THEORETICAL WEIGHT kg/m**  
TEORİK AĞIRLIK kg/m  
**2.870**

**CORNER JOINTS**  
KÖŞE BAĞLANTILAR



**DIE-CAST CORNER JOINT**  
PİMLİ BAĞLANTI



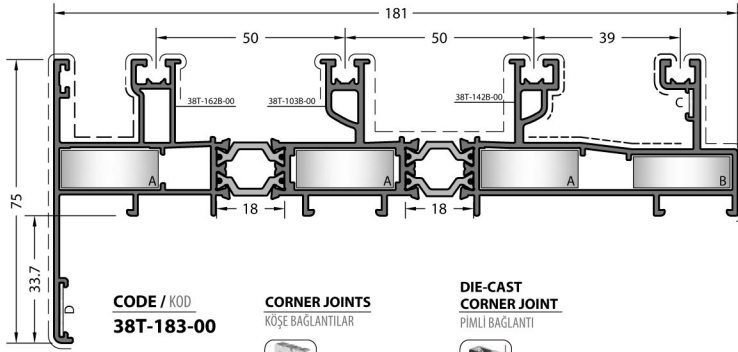
**CODE / KOD**  
**38T-197-00**

**THEORETICAL WEIGHT kg/m**  
TEORİK AĞIRLIK kg/m  
**3.114**

**CORNER JOINTS**  
KÖŞE BAĞLANTILAR



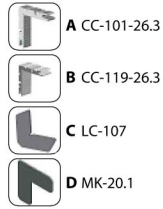
**DIE-CAST CORNER JOINT**  
PİMLİ BAĞLANTI



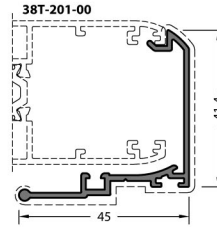
**CODE / KOD**  
**38T-183-00**

**THEORETICAL WEIGHT kg/m**  
TEORİK AĞIRLIK kg/m  
**3.180**

**CORNER JOINTS**  
KÖŞE BAĞLANTILAR

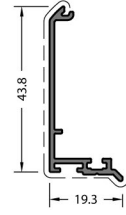


**DIE-CAST CORNER JOINT**  
PİMLİ BAĞLANTI



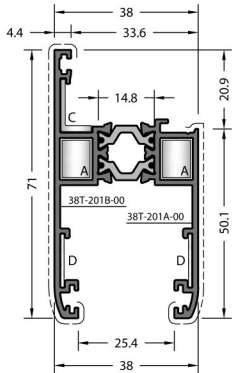
**CODE / KOD**  
**38-502-00**

**THEORETICAL WEIGHT kg/m**  
TEORİK AĞIRLIK kg/m  
**0.425**



**CODE / KOD**  
**38T-512-00**

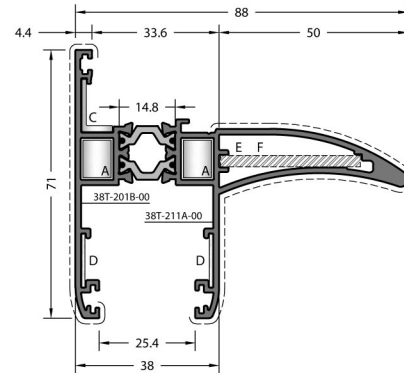
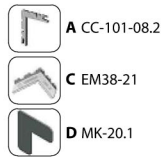
**THEORETICAL WEIGHT kg/m**  
TEORİK AĞIRLIK kg/m  
**0.275**



**CODE / KOD**  
**38T-201-00**

**THEORETICAL WEIGHT kg/m**  
TEORİK AĞIRLIK kg/m  
**1.113**

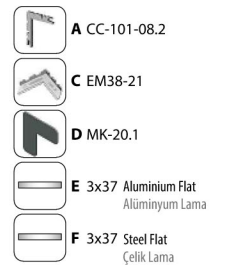
**CORNER JOINTS**  
KÖŞE BAĞLANTILAR



**CODE / KOD**  
**38T-211-00**

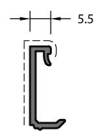
**THEORETICAL WEIGHT kg/m**  
TEORİK AĞIRLIK kg/m  
**1.611**

**CORNER JOINTS**  
KÖŞE BAĞLANTILAR



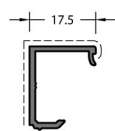
**CODE / KOD**  
**38-801-00**

**THEORETICAL WEIGHT kg/m**  
TEORİK AĞIRLIK kg/m  
**0.133**



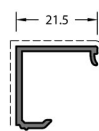
**CODE / KOD**  
**38-802-00**

**THEORETICAL WEIGHT kg/m**  
TEORİK AĞIRLIK kg/m  
**0.141**



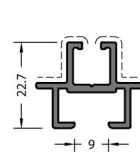
**CODE / KOD**  
**38-807-00**

**THEORETICAL WEIGHT kg/m**  
TEORİK AĞIRLIK kg/m  
**0.184**



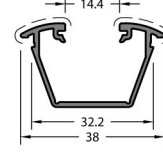
**CODE / KOD**  
**38-808-00**

**THEORETICAL WEIGHT kg/m**  
TEORİK AĞIRLIK kg/m  
**0.197**



**CODE / KOD**  
**38-503-00**

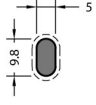
**THEORETICAL WEIGHT kg/m**  
TEORİK AĞIRLIK kg/m  
**0.371**



**CODE / KOD**  
**38C-513-00**

**THEORETICAL WEIGHT kg/m**  
TEORİK AĞIRLIK kg/m  
**0.320**

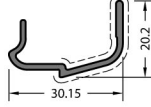




5 Micron Anodized.  
5 Mikron Eloksal.

**CODE / KOD**  
**13-134-050R**

**THEORETICAL WEIGHT kg/m**  
TEORİK AĞIRLIK kg/m  
**0.118**



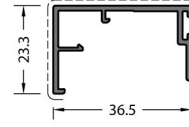
**CODE / KOD**  
**38T-510-00**

**THEORETICAL WEIGHT kg/m**  
TEORİK AĞIRLIK kg/m  
**0.233**

**CAP KAPAK**

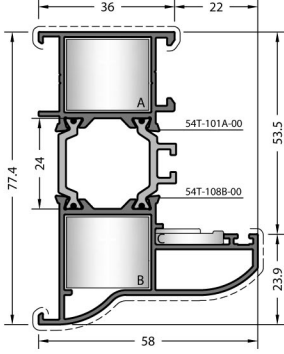


EM38T-510



**CODE / KOD**  
**38T-521-00**

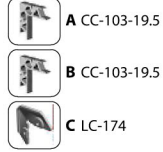
**THEORETICAL WEIGHT kg/m**  
TEORİK AĞIRLIK kg/m  
**0.352**



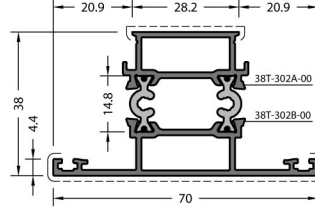
**CODE / KOD**  
**60T-108-00**

**THEORETICAL WEIGHT kg/m**  
TEORİK AĞIRLIK kg/m  
**1.381**

**CORNER JOINTS**  
KÖŞE BAĞLANTILAR

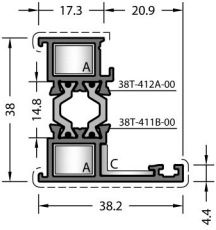


**DIE-CAST CORNER JOINT**  
PİMLİ BAĞLANTI



**CODE / KOD**  
**38T-302-00**

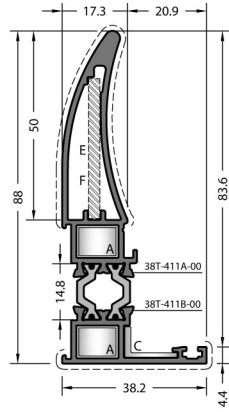
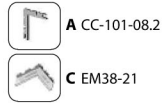
**THEORETICAL WEIGHT kg/m**  
TEORİK AĞIRLIK kg/m  
**1.077**



**CODE / KOD**  
**38T-413-00**

**THEORETICAL WEIGHT kg/m**  
TEORİK AĞIRLIK kg/m  
**0.729**

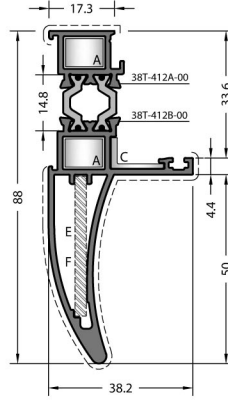
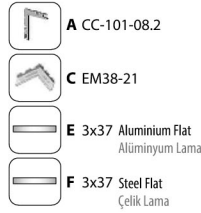
**CORNER JOINTS**  
KÖŞE BAĞLANTILAR



**CODE / KOD**  
**38T-411-00**

**THEORETICAL WEIGHT kg/m**  
TEORİK AĞIRLIK kg/m  
**1.227**

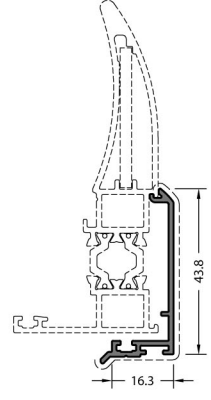
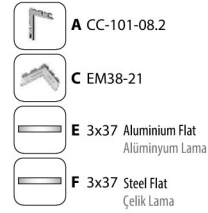
**CORNER JOINTS**  
KÖŞE BAĞLANTILAR



**CODE / KOD**  
**38T-412-00**

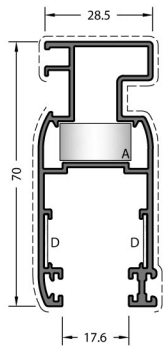
**THEORETICAL WEIGHT kg/m**  
TEORİK AĞIRLIK kg/m  
**1.226**

**CORNER JOINTS**  
KÖŞE BAĞLANTILAR



**CODE / KOD**  
**38T-512-00**

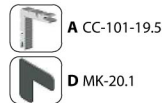
**THEORETICAL WEIGHT kg/m**  
TEORİK AĞIRLIK kg/m  
**0.275**



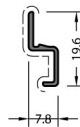
**CODE / KOD**  
**38T-251-00**

**THEORETICAL WEIGHT kg/m**  
TEORİK AĞIRLIK kg/m  
**0.920**

**CORNER JOINTS**  
KÖŞE BAĞLANTILAR

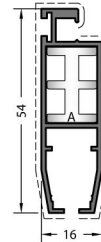


**DIE-CAST CORNER JOINT**  
PİMLİ BAĞLANTI



**CODE / KOD**  
**38T-252-00**

**THEORETICAL WEIGHT kg/m**  
TEORİK AĞIRLIK kg/m  
**0.084**

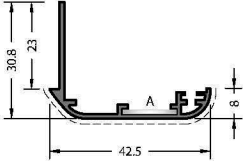


**CODE / KOD**  
**1621**

**THEORETICAL WEIGHT kg/m**  
TEORİK AĞIRLIK kg/m  
**0.498**

**CORNER JOINTS**  
KÖŞE BAĞLANTILAR

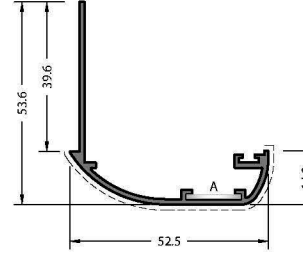




CODE / KOD  
**07-102-00**

THEORETICAL  
WEIGHT kg/m  
TEORİK AĞIRLIK kg/m  
**0.324**

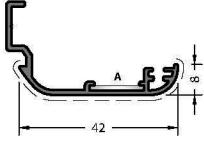
CORNER JOINTS  
KÖŞE BAĞLANTILAR



CODE / KOD  
**07-103-00**

THEORETICAL  
WEIGHT kg/m  
TEORİK AĞIRLIK kg/m  
**0.488**

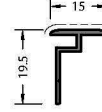
CORNER JOINTS  
KÖŞE BAĞLANTILAR



CODE / KOD  
**07-106-00**

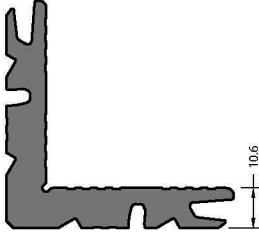
THEORETICAL  
WEIGHT kg/m  
TEORİK AĞIRLIK kg/m  
**0.318**

CORNER JOINTS  
KÖŞE BAĞLANTILAR



CODE / KOD  
**07-201-00**

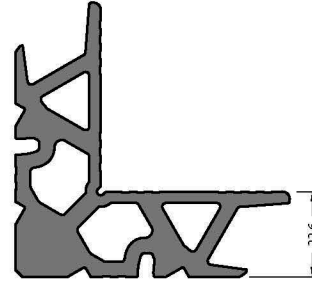
THEORETICAL  
WEIGHT kg/m  
TEORİK AĞIRLIK kg/m  
**0.118**



Mill Finish / Pres  
No visible surface.  
Görünen yüzeyi yoktur.

CODE / KOD  
**09-101-00**

THEORETICAL  
WEIGHT kg/m  
TEORİK AĞIRLIK kg/m  
**2.561**



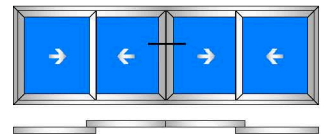
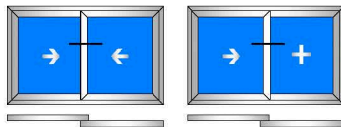
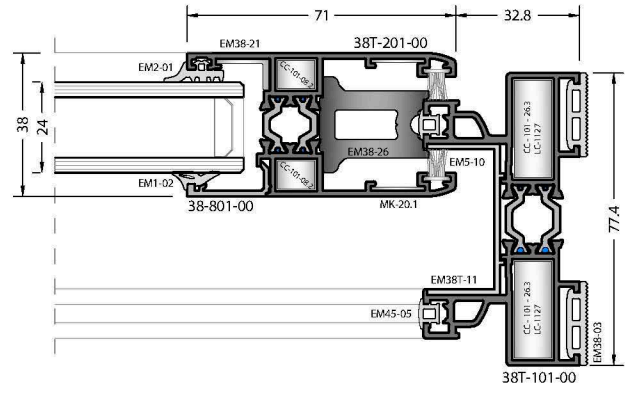
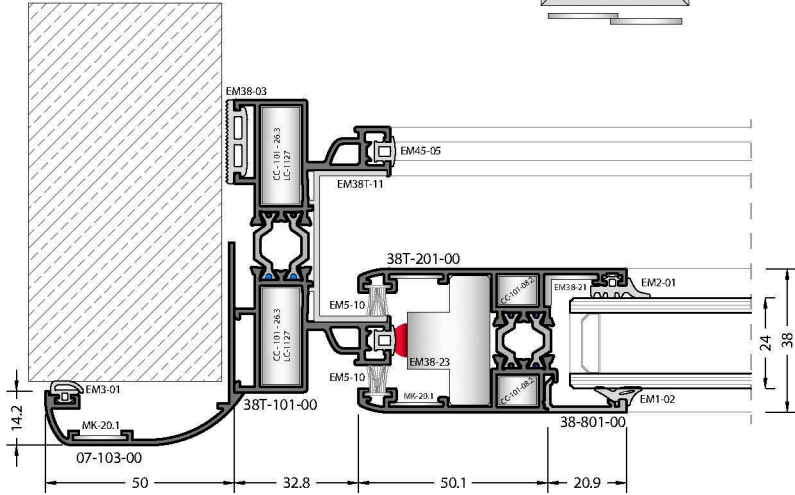
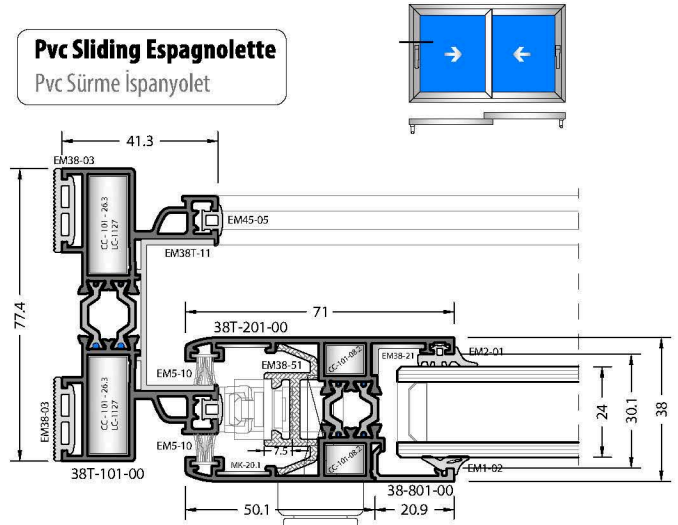
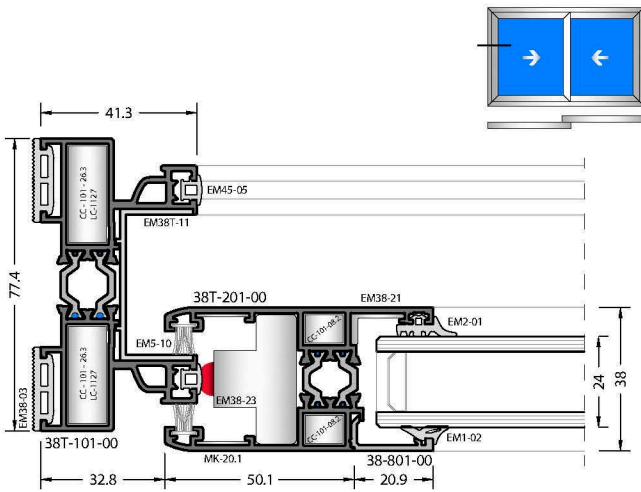
Mill Finish / Pres  
No visible surface.  
Görünen yüzeyi yoktur.

CODE / KOD  
**09-103-00**

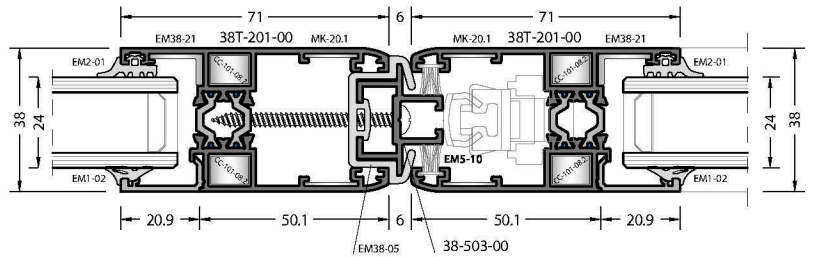
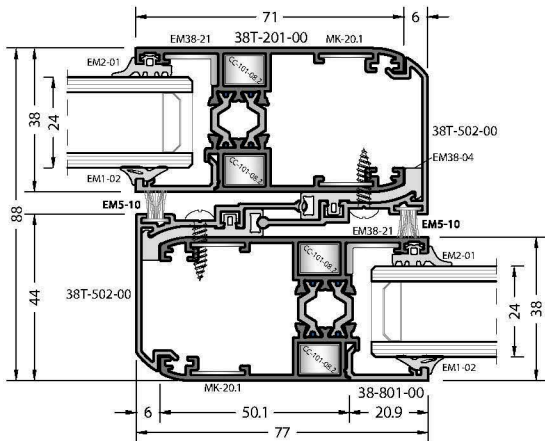
THEORETICAL  
WEIGHT kg/m  
TEORİK AĞIRLIK kg/m  
**3.689**

**38T SYSTEM / SİSTEM  
DETAILS / DETAYLAR**

**Pvc Sliding Espagnolette**  
Pvc Sürme İspanyolet

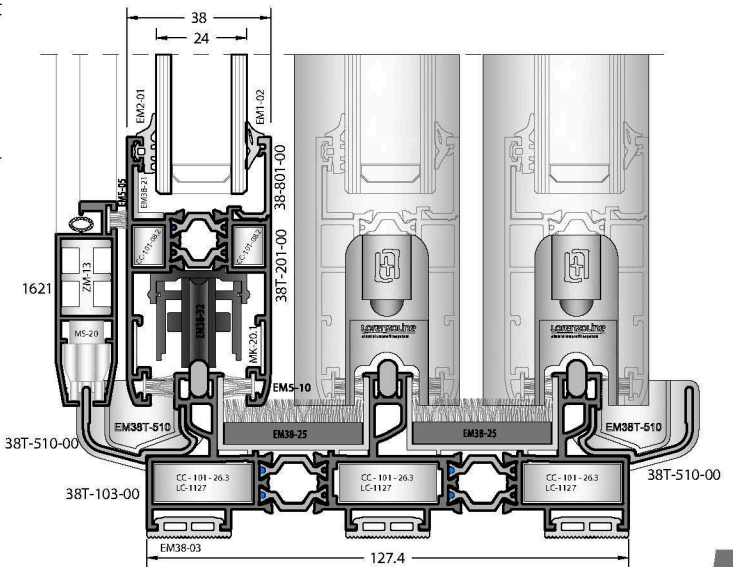
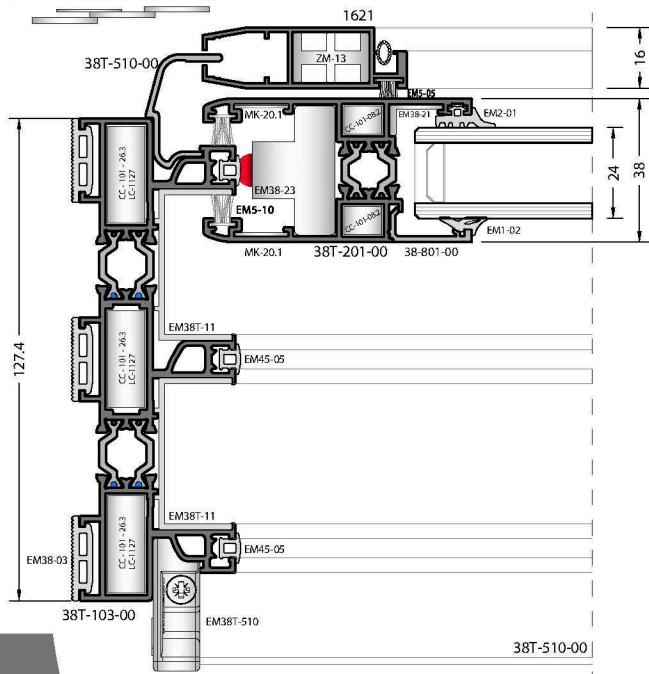
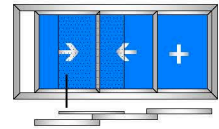
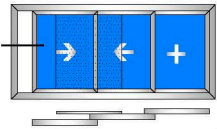
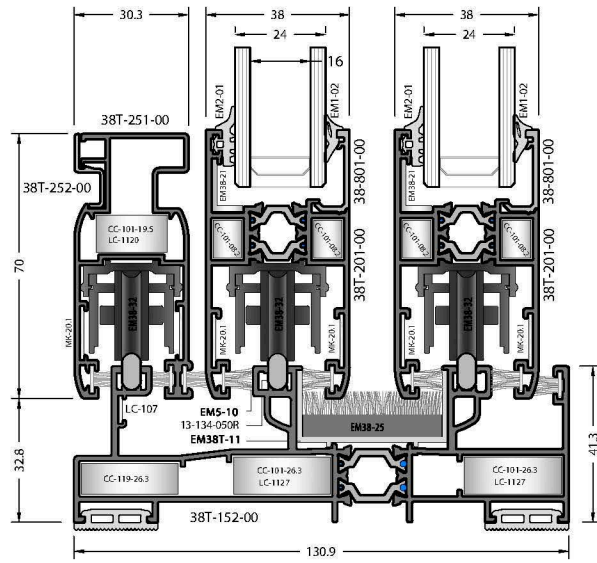
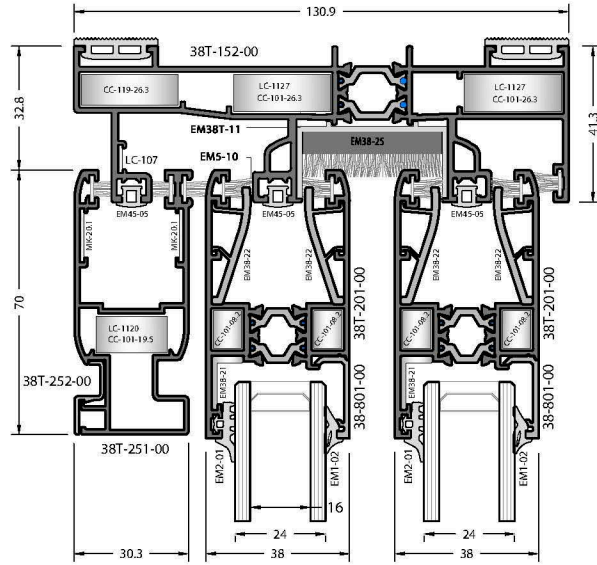
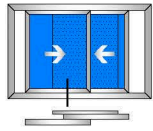
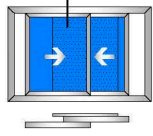


**STANDARD / STANDART**





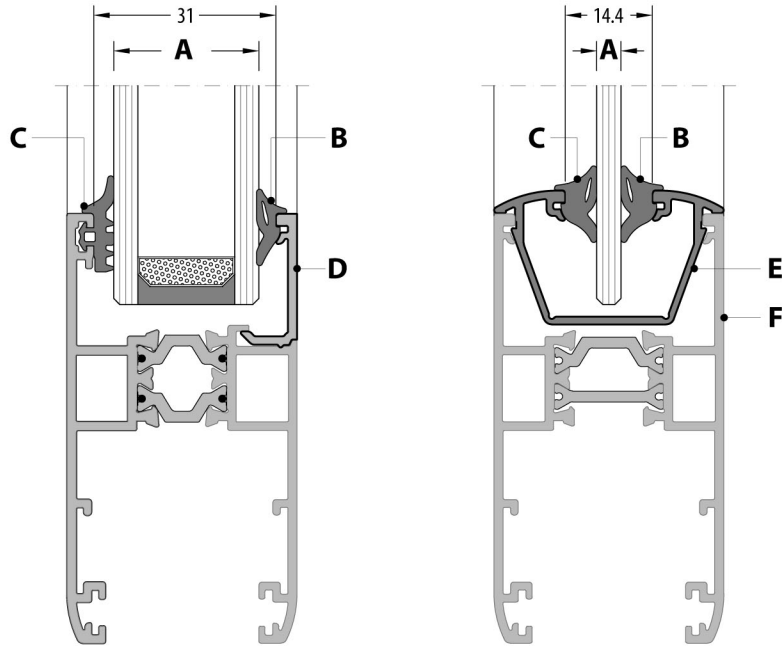




1:2 Scaled / 1:2 Ölçek

**38T SYSTEM / SİSTEM  
ACCESSORIES / AKSESUARLAR**

## GLAZING TABLE / CAM TABLOSU



A	B	C	D	E	F
GLAZING THICKNESS CAM KALINLIĞI	INSIDE GLASS GASKET İÇ CAM FİTİLİ	OUTSIDE GLASS GASKET DIŞ CAM FİTİLİ	GLAZING BEAD CAM ÇİTASI	ADAPTER ADAPTÖR	SASH KANAT
4 mm	EM1-04	EM2-01	38-808-00	-	38T-201-00 38T-211-00
		EM1-04	-	38C-513-00	38T-202-00
5 mm	EM1-03	EM2-01	38-808-00	-	38T-201-00 38T-211-00
6 mm	EM1-03	EM1-03	-	38C-513-00	38T-202-00
	EM1-02	EM2-01	38-808-00	-	38T-201-00 38T-211-00
8 mm	EM1-02	EM1-02	-	38C-513-00	38T-202-00
	EM1-04	EM2-01	38-807-00	-	38T-201-00 38T-211-00
9 mm	EM1-03	EM2-01	38-807-00	-	38T-201-00 38T-211-00
10 mm	EM1-02	EM2-01	38-807-00	-	38T-201-00 38T-211-00
20 mm	EM1-05	EM1-04	-	-	38T-202-00
	EM1-04	EM2-01	38-802-00	-	38T-201-00 38T-211-00
22 mm	EM1-04	EM1-03	-	-	38T-202-00
		EM2-01	38-801-00	-	38T-201-00 38T-211-00
24 mm	EM1-03	EM1-02	-	-	38T-202-00
	EM1-02	EM2-01	38-801-00	-	38T-201-00 38T-211-00

## PRESS CORNER JOINTS / PRES KÖŞE BAĞLANTILAR

## GASKETS / FİTİLLER

ACCESSORY CODE AKSESUAR KOD	DRAWING ÇİZİM	PROFILE CODE PROFİL KOD	QUANTITY MİKTAR	CUTTING SIZE KESİM ÖLÇÜSÜ	APPLICATION PROFILES ÇALIŞTIĞI PROFİL	APPLICATION DETAIL UYGULAMA DETAY
CC-101-08.2		09-101-00	90 pieces adet	08.2 mm	38T-201-00 38T-211-00 38T-411-00 38T-412-00 38T-413-00	
CC-101-26.3		09-101-00	75 pieces adet	26.3 mm	38T-101-00 38T-112-00 38T-103-00 38T-113-00 38T-122-00 38T-123-00 38T-132-00 38T-133-00 38T-172-00 38T-182-00 38T-143-00 38T-197-00 38T-163-00 38T-173-00 38T-183-00	
CC-103-19.5		09-103-00	42 pieces adet	19.5 mm	60T-108-00	
CC-119-26.3		09-119-00		26.3 mm	38T-182-00 38T-183-00 38T-143-00 38T-197-00	

CODE KOD	DRAWING ÇİZİM	APPLICATION UYGULAMA	DESCRIPTION AÇIKLAMA	WEIGHT kg/m AĞIRLIK	PACKAGE QUANTITY PAKET MİKTARI
EM1-02			GLAZING GASKET INSIDE İÇ CAM FİTİLİ (EPDM)	0.050	300 m
EM1-03			GLAZING GASKET INSIDE İÇ CAM FİTİLİ (EPDM)	0.060	250 m
EM1-04			GLAZING GASKET INSIDE İÇ CAM FİTİLİ (EPDM)	0.070	215 m
EM2-01			GLAZING GASKET OUTSIDE DIŞ CAM FİTİLİ (EPDM)	0.052	285 m
EM45-05			FRAME GASKET KASA FİTİLİ (EPDM)	0.030	500 m
EM38-03			FRAME GASKET KASA FİTİLİ (EPDM)	0.110	136 m
EM38-04			CLAMPING GASKET STANDARD KENET FİTİLİ - STANDART (EPDM)	0.148	101 m
EM38-14			CLAMPING GASKET NARROW KENET FİTİLİ - DAR (EPDM)	0.093	161 m
EM38-05			ADAPTER GASKET ADAPTÖR FİTİLİ (EPDM)	0.210	71 m
EM5-05			BRUSH FİRÇA	-	350 m
EM5-10			BRUSH FİRÇA	-	300 m

## ACCESSORIES / AKSESUARLAR

ACCESSORY CODE AKSESUAR KOD	DRAWING ÇİZİM	APPLICATION PROFILES ÇALIŞTIĞI PROFİL	PACKAGE QUANTITY PAKET MİKTARI	APPLICATION DETAIL UYGULAMA DETAY
EM38-91		EMBEDDING HANDLE AND STRIKER HAVUZ KOL VE KARŞILIĞI	SET / TAKIM	
EM38-32		PULLEY WITH 2 WHEELS SÜRME İKİLİ RULMAN (120 Kg)	PIECE / ADET	
MS-20		PULLEY (FOR FLY SCREEN) MAKARA (SİNEKLİK İÇİN)	PIECE / ADET	
EM38-11		PVC PROFILE PVC PROFİL	6 - METERS 6 - METRE	
EM38-51		PVC ESPANOLETTE PROFILE PVC İSPANYOLET PROFİLİ	6 - METERS 6 - METRE	
EM38-23		STOPPER STOPER	PIECE / ADET	
EM38-22		SASH STABILITY ADAPTER TİTREŞİM TAKOZU	PIECE / ADET	
EM38-25		WEATHER STRIP HAVA KESİCİ	PIECE / ADET	
EM38-26		FIXED SASH ACCESSORY KANAT SABİTLEME TAKOZU	PIECE / ADET	
EM38-24		COVER CLIP - STANDARD ADAPTÖR KAPAĞI STANDART	SET / TAKIM	
EM38-512		COVER CLIP - NARROW ADAPTÖR KAPAĞI - DAR	SET / TAKIM	
EM38-211		SUPPORT PROFILE CAP TAKVIYE KAPAĞI	SET / TAKIM	
EM38-411		SUPPORT PROFILE CAP TAKVIYE KAPAĞI	SET / TAKIM	

## CORNER JOINTS / KÖŞE BAĞLANTILAR

ACCESSORY CODE AKSESUAR KOD	DRAWING ÇİZİM	APPLICATION PROFILES ÇALIŞTIĞI PROFİL	APPLICATION DETAIL UYGULAMA DETAY
LC-1127		38T-101-00 38T-112-00 38T-103-00 38T-113-00 38T-122-00 38T-123-00 38T-132-00 38T-133-00 38T-172-00 38T-182-00 38T-143-00 38T-197-00 38T-163-00 38T-173-00 38T-183-00	
LC-2320		60T-108-00	
LC-174		60T-108-00	
MK-20.1		38T-201-00 07-102-00 07-103-00 38T-172-00 38T-182-00 38T-163-00 38T-173-00 38T-183-00	
LC-107		38T-122-00 38T-123-00 38T-132-00 38T-133-00 38T-172-00 38T-182-00 38T-143-00 38T-197-00 38T-173-00 38T-183-00	
EM38-21		38T-201-00	
ZM-13		1621 FOR FLY SCREEN SİNEKLİK	

## ACCESSORIES / AKSESUARLAR

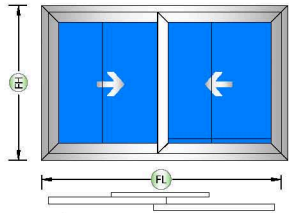
ACCESSORY CODE AKSESUAR KOD	DRAWING ÇİZİM	APPLICATION PROFILES ÇALIŞTIĞI PROFİL	PACKAGE QUANTITY PAKET MİKTARI	APPLICATION DETAIL UYGULAMA DETAY
EM10-01				
EM10-02				
EM10-03				
EM10-04				
EM10-05				
EM38T-10		DRAINAGE CAP TAHLİYE KAPAĞI	PIECE / ADET	
EM38T-510		FLY SCREEN RAIL CAP SİNEKLİK RAY KAPAĞI	SET / TAKIM	



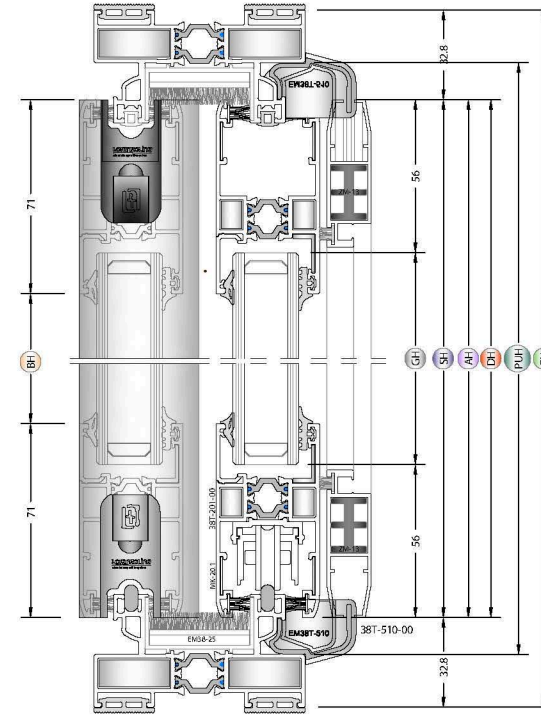
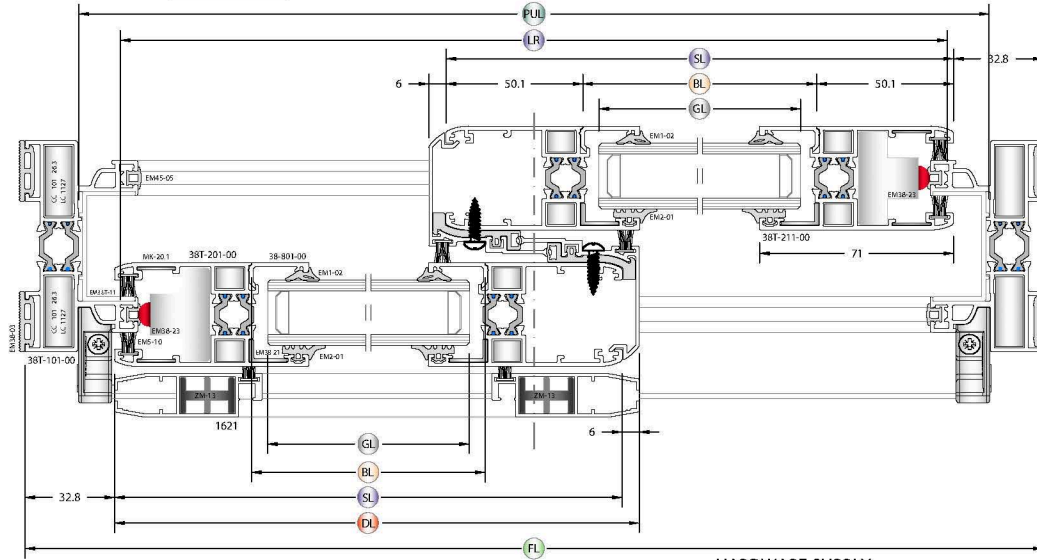


**38T SYSTEM / SİSTEM  
CUTTING SIZE / KESİM ÖLÇÜLERİ**

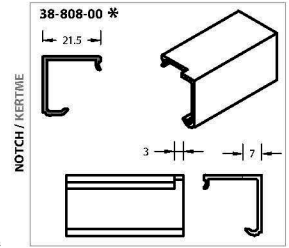




### 38T SLIDING - STANDARD 38T SÜRME - STANDART



#### B DETAIL / B DETAYI



#### PROFILES / PROFİLLER

Code Kod	Drawing Çizim	Cut Kesim	Quantity (pcs-m) Kesim (Paket)	Dimensions (mm) Boyutlar
38T-101-00			2 pcs/adet	FL
38T-201-00			4 pcs/adet	SL = $\frac{FL-1}{2}$
38-801-00			4 pcs/adet	SH = FH - 65.6
38-802-00			4 pcs/adet	BL = SL - 100
38-808-00			4 pcs/adet	BH = SH - 142
38T-502-00			2 pcs/adet	AH = SH
13-134-050R			2 pcs/adet	LR = FL - 74
EM38-11			2 pcs/adet	PUL = FL - 40
			2 pcs/adet	PUH = FH - 40
1621			2 pcs/adet	DL = SL + 6
			2 pcs/adet	DH = SH
38T-510-00			2 pcs/adet	FL - 45

#### HARDWARE SUPPLY SARF MALZEMELER

Code Kod	Quantity (pcs - m) Miktar (Adet-m)	Picture Resim
CC-101-26.3 / LC-1127	8 pcs/adet	
CC-101-08.2	16 pcs/adet	
EM38-21	8 pcs/adet	
MK-20.1	16 pcs/adet	
ZM-13	4 pcs/adet	
EM5-10	{8 x SL} + {6 x SH}	
EM5-05	{2 x DL} + {2 x DH}	
EM45-05	{2 x FL} + {4 x FH}	
EM2-01	{4 x SL} + {4 x SH}	
EM1-0X	{4 x SL} + {4 x SH}	
EM38-04	2 x SH	
EM38-03	{4 x FL} + {4 x FH}	

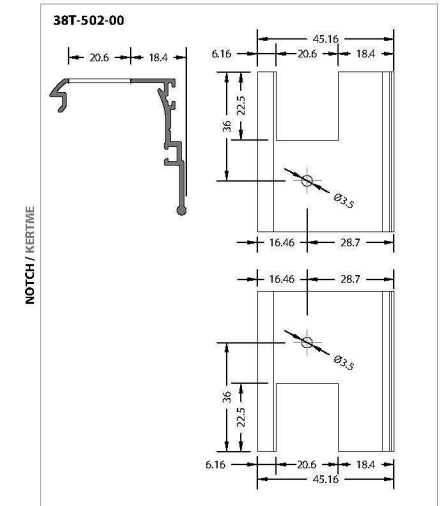
#### ACCESSORIES / AKSESUARLAR

Code Kod	Description Açıklama	Quantity Miktar	Picture Resim
EM38-32	Pulley With 2 Wheels Sürme İki kılı Rulman (120 kg)	4 pcs/adet	
EM38-91	Embedding Handle and striker Havuz Kol ve Karşılığı	2 set/takım	
EM38-23	Stopper Stoper	4 pcs/adet	
EM38-22	Sash Stability Adapter Titreşim Takozu	4 pcs/adet	
EM38-24	Cover Clip Adaptör Kapığı	2 set/takım	
EM38-25	Weather strip Hava Kesici	2 pcs/adet	
MS-20	Pulley ( For Fly Screen ) Makara (Sineklik için)	2 pcs/adet	
EM38T-510	Fly Screen Rail Cap Sineklik Ray Kapığı	2 set/takım	
EM38T-10	Drainage Cap Tahliye Kapığı	2 pcs/adet	

#### GLASS / CAM

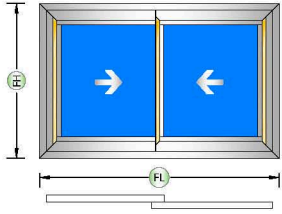
Code Kod	Drawing Çizim	Quantity (pcs-m) Kesim (Paket)	Dimensions (mm) Boyutlar
Glass		2 pcs/adet	GL = SL - 112
Cam			GH = SH - 112

#### C DETAIL / C DETAYI



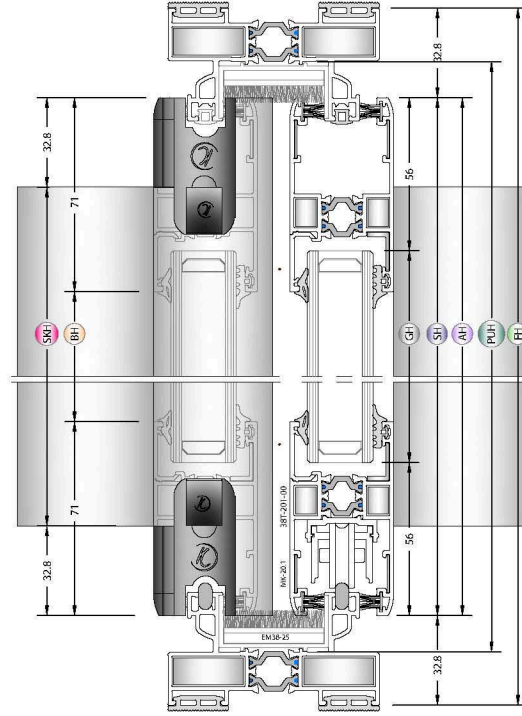
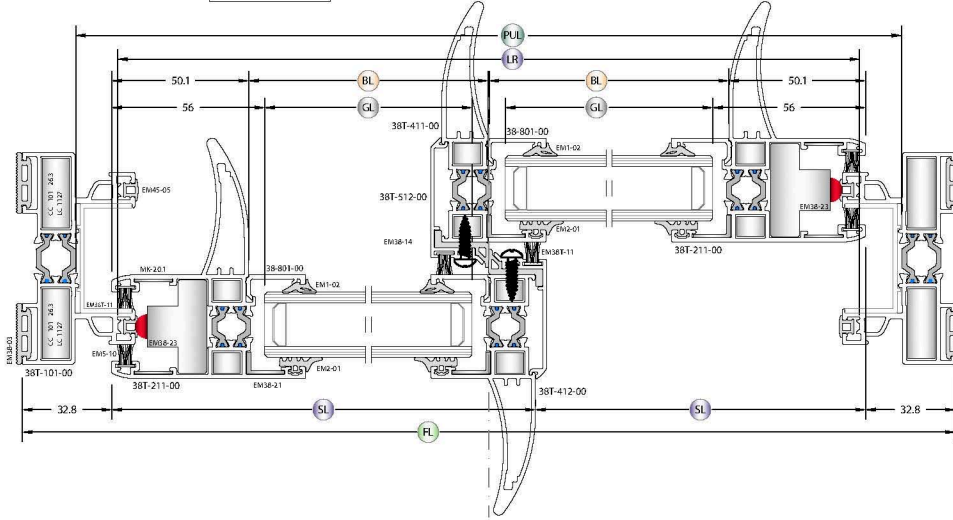
Cutting dimensions for other typologies, please contact with us.

Diğer açılım tipleri kesim ölçüleri için lütfen irtibata geçiniz.

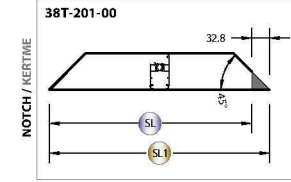


### 38T SLIDING - NARROW

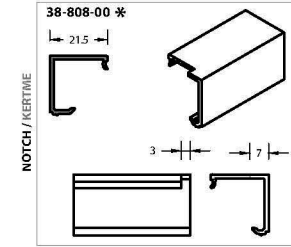
38T SÜRME - DAR



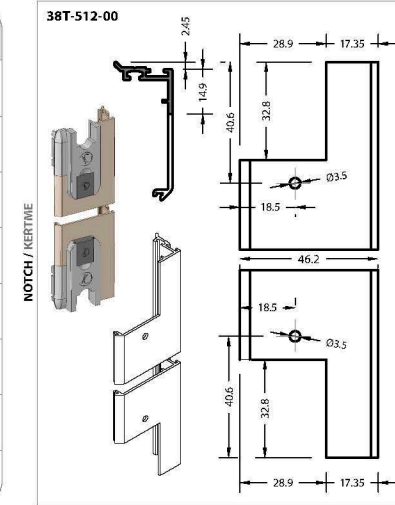
#### A DETAIL / A DETAYI



#### B DETAIL / B DETAYI



#### C DETAIL / C DETAYI



#### PROFILES / PROFİLLER

Code Kod	Drawing Çizim	Cut Kesim	Quantity (pcs-m) Kesim (Paket)	Dimensions (mm) Boyutlar
38T-101-00			2 pcs/adet	FL
38T-211-00			2 pcs/adet	FH
38T-201-00			4 pcs/adet	SL1 = $\frac{FL}{2} + 17$ SL = SL1 - 32.8
38T-411-00			1 pcs/adet	SKH = FH - 65.6
38T-412-00			1 pcs/adet	SKH = FH - 65.6
38-801-00			4 pcs/adet	BL = SL - 67.7
38-802-00			4 pcs/adet	BH = SH - 142
38-808-00			4 pcs/adet	BH = SH - 142
38T-512-00			2 pcs/adet	AH = SH
13-134-050R			2 pcs/adet	LR = FL - 74
EM38-11			2 pcs/adet	PUL = FL - 40
EM38-11			2 pcs/adet	PUH = FH - 40

#### HARDWARE SUPPLY

SARF MALZEMELER

Code Kod	Quantity (pcs - m) Miktar (Adet-m)	Picture Resim
CC-101-26.3 / LC-1127	8 pcs/adet	
CC-101-08.2	16 pcs/adet	
EM38-21	8 pcs/adet	
MK-20.1	16 pcs/adet	
EM5-10	{8 x SL} + {6 x SH}	
EM45-05	{2 x FL} + {4 x FH}	
EM2-01	{4 x SL} + {4 x SH}	
EM1-0X	{4 x SL} + {4 x SH}	
EM38-14	2 x SH	
EM38-03	{4 x FL} + {4 x FH}	

#### ACCESSORIES / AKSESUARLAR

Code Kod	Description Açıklama	Quantity Miktar	Picture Resim
EM38-32	Pulley With 2 Wheels Surme İki Rulman (120 kg)	4 pcs/adet	
EM38-91	Embedding Handle and striker Havuz Kol ve Karşılığı	2 set/takım	
EM38-23	Stopper Stoper	4 pcs/adet	
EM38-22	Sash Stability Adapter Titreşim Takozu	4 pcs/adet	
EM38-512	Cover Clip Adaptör Kapağı	2 set/takım	
EM38-25	Weather strip Hava Kesici	2 pcs/adet	
EM38-211	Support Profile Cap Takviye Kapağı	2 set/takım	
EM38-411	Support Profile Cap Takviye Kapağı	2 set/takım	

#### GLASS / CAM

Code Kod	Drawing Çizim	Quantity (pcs-m) Kesim (Paket)	Dimensions (mm) Boyutlar
Glass Cam		2 pcs/adet	GL = SL - 79 GH = SH - 112

Cutting dimensions for other typologies, please contact with us.  
Diğer açılım tipleri kesim ölçüleri için lütfen irtibata geçiniz.



Produced by 

**KURTOĞLU BAKIR KURŞUN SAN. A.Ş.**  
İstasyon Mah. Akbayır Mevkii Kümesi No: 81  
Velimeşe - Çorlu 59851 Tekirdağ / TÜRKİYE  
T: +90 282 684 70 00 F: +90 282 684 70 01  
[www.kurtogluas.com](http://www.kurtogluas.com) [kurtoglu@kurtogluas.com](mailto:kurtoglu@kurtogluas.com)

 **Lorenzoline**  
aluminium profile system